



## QUICK SIX S2+ BARFEED

COMPACT, SHORT, AUTOMATIC BAR  
FEEDER FOR FIXED HEADSTOCK LATHES

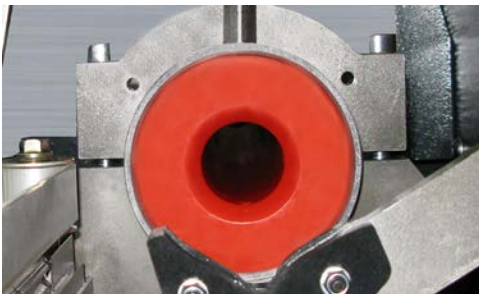
Diameter range: 3/8" - 3-1/8"  
(10 mm to 80 mm)

Overall barstock length: 27.5" to 6'3"



### PERIPHERAL VISION

For CNC machine tool peripherals, it's **LNS**, then all the rest



### **The 6-Foot Advantage**

The Quick Six S2+ pushes productivity to new limits by quickly and efficiently loading 6-foot bar stock into your turning machine. This optimum length bar stock can safely turn faster than 12-foot length while minimizing bent bar issues. The Quick Six S2+'s compact design takes up less valuable floor space. Best of all, one person can easily load the 3/8" to 3-1/8" diameter 6-foot bar stock thus reducing labor cost.

Using field-proven principles, the Quick Six S2+ guides bar stock through a single guide tube without scratching the bar stock when loading. Pressurized hydrostatic oil film is used to absorb vibration and friction. This quick change guide tube properly supports the bar to assure high spindle speeds.



### **Quick Production Setup Changeovers**

The Quick Six S2+ offers the industry's widest range for a 6-foot automatic magazine bar loader accepting 3/8" to 3-1/8" diameter bar stock. Changing the single guide tube is quick and easy in less than 4 minutes. When changing diameter, simply follow the prompts on the user-friendly, ultra-light touch screen HMI with prompting menu screens ensures the interaction between the bar feeder and the lathe, allowing the production process to run safely and efficiently.

The Quick Six S2+ automatically performs all changeover adjustments by answering three simple questions when prompted by the remote control:

1. Shape?
2. Diameter?
3. Part Length?

Input any additional parameter information related to the application. Then, all changeover adjustments happen automatically.

Within the pusher diameter, your changeover is complete in seconds. The Quick Six S2+ takes the information and automatically makes these adjustments:

- Bar to centerline of the lathe
- Magazine storage bar selection mechanism to bar diameter ensuring one bar is loaded at a time
- Feed and torque rates

### **Additional valuable features of the HMI include:**

- Displays alarm descriptions
- Alarm history of operation errors and position tracking (inch/metric programming)
- Enhanced serviceability through the QR code technology populates diagnostic data and automatically generates an email to be sent to an LNS Customer Service Representative
- Forecasting tools
- A searchable list within the Parts Library program

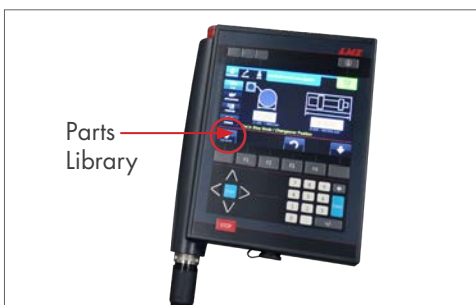
### **Automation Through Communication**

The Quick Six S2+ offers a "Parts Library", which is a 500 parts storage feature. The "Parts Library" allows the user to store specific parameter configurations that are unique to a machining program.

Whether you need to run the job now or at a later time, simply selecting the desired part number or name from the "Parts Library" will instantly restore the appropriate data. Saved parts programs can be saved as standard numeric or optional alphanumeric.

Enhanced with an embedded web server in the PLC allowing the bar feeder to share data with the CNC machine tool via LNS e-Connect. Ethernet interface with LNS e-Connect programmed parts in the library can be selected via CNC program.

(CNC software must support Ethernet interface)







### Unattended Operation

Continually loading new bar stock increases your production time and is costly. Your competition could be a step ahead by reducing their production time with a bar feed that loads bar stock simultaneously.

The standard chain magazine holds 7 pieces of bar stock and can be used with an optional lower horizontal rack. For added safety the chain magazine is secured by a light beam. If the light barrier is interrupted, the loader will not start or move.

Manual lifting can be hazardous and painful for a machine operator. The Quick Six S2+'s chain elevator design omits the manual lifting of barstock. The Quick Six S2+ is designed with an elevator method to raise bars up and into position. The elevator design increases safety aspects while operating the bar feeder.



### Making more room without compromising on precision

To change spindle liners, space must be created between the magazine bar loader and the headstock. The magazine bar loader moves without compromising its stability and, therefore, its precision.

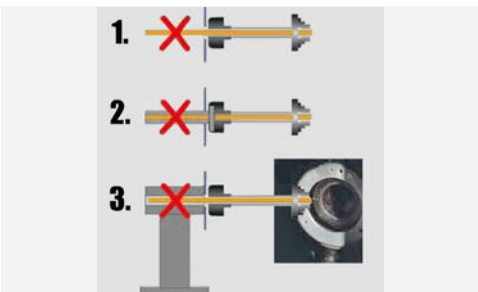
Z-axis retraction facilitates access to the spindle for changing spindle liners or for lathe maintenance operations. The chassis retracts up to 15.5" (390 mm) on the upper part of the stands and maintains perfect alignment with the spindle. This mechanism saves time spent in realignment.



### Efficient Diameter Changeover

Complicated and time consuming diameter changeover can hinder your production increasing unnecessary cost.

The Quick Six S2+ offers the industry's widest range for a 6-foot automatic magazine bar loader accepting 3/8" to 3-1/8" diameter bar stock. Changing the single guide tube is quick and easy in less than 4 minutes. When changing diameter, simply follow the prompts on the remote control to enter the bar diameter, part length and guide tube ID. The Quick Six S2+ does the rest in record time.



### Safety

One of the most obvious examples of safety risk is the bar protruding from the back of the lathe without appropriate support.

The Quick Six S2+ offers a professional and safe solution to this often badly-managed danger. The Quick Six S2+ guarantees safe bar guiding up to 6' regardless of spindle length. The Quick Six S2+ eliminates temporary and hazardous solutions currently used to work in half-bars with short bar loaders, such as:

1. Allowing the bar to protrude without support
2. Extended spindle liners
3. Added bar supports



# QUICK SIX S2+ BARFEED

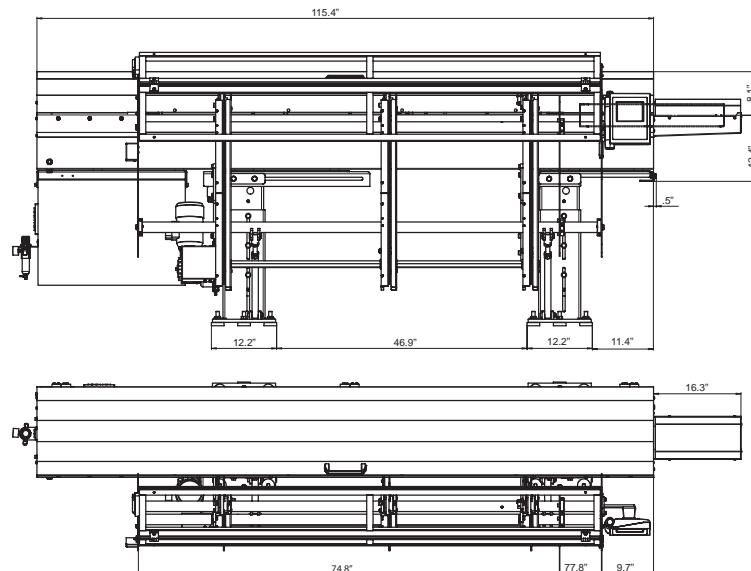
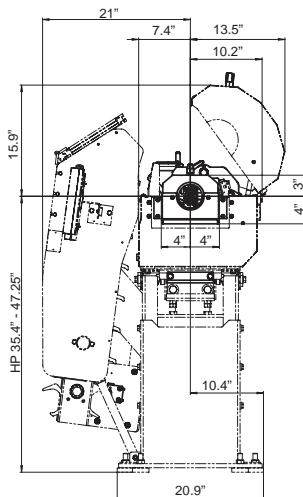
## TECHNICAL SPECIFICATIONS

Specifications subject to change without notice

Capacity	
Diameter	3/8" to 3-1/8" (10 mm - 80 mm)
Bar Length	27.5" to 6'3" (700 mm - 1900 mm)
Loading System	Chain Loading Rack
Loading Capacity	7 Bars
Loading	Front / Rear
Shipping Weight	2,145 lbs.
Applications	
Type of Headstock	Fixed
Z Axis Retraction	15.5" (390 mm)
Changeovers	
Complete changeover	4 minutes or less
Driving Systems and Bar Support	
Motor	Servo
Drive	Notched Belt
Options	
Lower horizontal rack magazine to increase total loading capacity	

### Barstock Straightness Specifications and Performance

For optimum rotational performance speeds, bar stock straightness needs to be .020" per 3.25 feet, non accumulative. Bar stock out of this tolerance will not run at optimum RPM. Other factors such as material type (brass, copper, bronze and other malleable materials), clamping efficiency of the machine workholding, alignment of the bar feed, oil type, bar preparation and spindle liners will affect optimum RPM capability of the system.



### PERIPHERAL VISION

Peripherals, by definition, are an outer boundary. But at LNS, that boundary is where we put our focus. Because here's the secret—with LNS peripherals on your side, you can turn your attention to what you do best—making chips and making money.

That's why we do what we do. Five product categories and industry-best expertise means no company on earth can match the passion and vision we have for machine tool peripherals.



LNS North America  
4621 East Tech Drive  
Cincinnati, Ohio 45245

513-528-5674  
Allproducts-sales@LNS-northamerica.com  
www.LNS-northamerica.com